

Red House® Nailhead Non-Iron Shirt. RH370



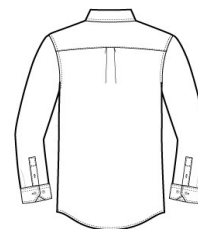
Thoroughly updated, this crisp nailhead shirt has a silky feel and a wrinkle-resistant finish for exceptional non-iron performance. 4-ounce, 60/40 cotton/polyester with pucker-free taped seams and RH engraved buttons to elevate the office-ready look. Button-down collar, left chest pocket, back box pleat and mitered adjustable cuffs.

CARE INSTRUCTIONS

Machine wash cold with like colors, only non-chlorine bleach when needed, tumble dry low, warm iron if needed.

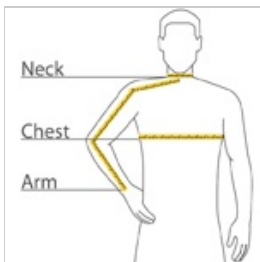


front



back

HOW TO MEASURE



CHEST WIDTH

Measure under the arm and around the fullest part of the chest with arms down, keeping tape horizontal.

NECK

Measure around the fullest part of the neck at the base.

ARM

Place hand on hip. Start at the center of the back of the neck and measure across the shoulder, to the elbow, and then down to the wrist.

SIZE CHART

	XS	S	M	XL	2XL	3XL	4XL	L
Chest	32-34	35-37	38-40	44-46	47-49	50-53	54-57	41-43
Neck	14 1/2 - 15	15 - 15 1/2	15 1/2 - 16	16 1/2 - 17	17 - 17 1/2	17 1/2 - 18	18 - 18 1/2	16 - 16 1/2
Arm	30 1/2	32	34	36 1/2	37 1/2	38 1/2	39 1/2	35

COLOR INFORMATION



Black
PMS NTR BLACK



Blue Pearl
PMS 7451C



Deep Scarlet
PMS 505C



Ice Grey
PMS NO MATCH



Mediterranean Blue
PMS 7687C



Navy
PMS 2139C



White
PMS WHITE