

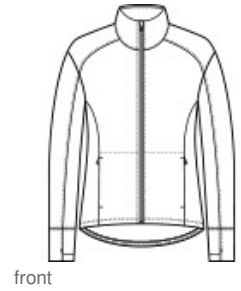


Make your move in Sport-Wick Flex Fleece. Lightweight with stretch, this fleece has a cotton hand, wicks moisture and delivers trend-right style.

- 7.4-ounce, 70/25/5 poly/rayon/spandex
- Tear-away removable label
- Cadet collar
- Zippered side pockets
- Self-fabric cuffs and hem
- Thumbholes for warmth
- Drop tail hem

CARE INSTRUCTIONS

Machine wash cold with like colors. Do not use fabric softener. Only non-chlorine bleach, when needed. Tumble dry low. Remove promptly. Cool iron, if necessary. Do not dry clean.



front



back

HOW TO MEASURE



BUST

Measure under the arm and around the fullest part of the bust with arms down, keeping tape horizontal.

SIZE CHART

| | XS | S | M | L | XL | XXL | 3XL | 4XL |
|------|-------|-------|-------|-------|-------|-------|-------|-------|
| Size | 2 | 4/6 | 8/10 | 12/14 | 16/18 | 20/22 | 24/26 | 28/30 |
| Bust | 32-34 | 35-36 | 37-38 | 39-41 | 42-44 | 45-47 | 48-51 | 52-55 |

COLOR INFORMATION



Black PMS NTR BLACK
 Dark Grey Heather PMS HEATHERED
 Light Grey Heather PMS 7687C
 True Navy PMS 533C
 True Royal PMS 7687C