

PORT AUTHORITY.

Port Authority® Women's Essential Rain Jacket L407

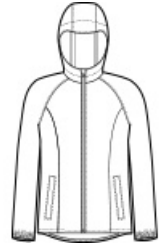


A year-round must-have, this fully seam-sealed 8K/5K waterproof, breathable 2.5-layer jacket has a DWR finish. It packs easily and gives great water-repellent, wind-resistant performance.

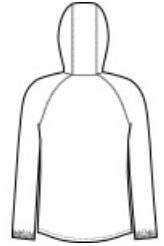
- 100% polyester shell bonded to a waterproof laminate film with DWR finish
- 8,000MM fabric waterproof rating
- 5,000G/M2 fabric breathability rating
- Interior grid print
- Waterproof center front zipper
- Interior storm flap with chin guard
- Front zippered pockets
- Elastic cuffs

CARE INSTRUCTIONS

Machine wash cold with like colors. Only non-chlorine bleach when needed. Tumble dry low. Cool iron if necessary. Do not Dry Clean.

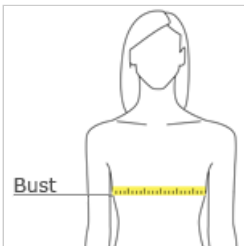


front



back

HOW TO MEASURE



BUST
Measure under the arm and around the fullest part of the bust with arms down, keeping tape horizontal.

SIZE CHART

	XS	S	M	L	XL	XXL	3XL	4XL
Size	2	4/6	8/10	12/14	16/18	20/22	24/26	28/30
Bust	32-34	35-36	37-38	39-41	42-44	45-47	48-51	52-55

COLOR INFORMATION

Please note: PMS code information is shown only when an exact match is available.



Deep Black
PMS BLACK C



Graphite
PMS 432C



True Navy
PMS 533C



True Royal
PMS 7687C